

11th ACA Annual Cashew Conference



A NEW VISION FOR PARTNERSHIPS & INVESTMENTS



Cotonou, Benin

September 18-21, 2017

Knowledge sharing. Exposition. Field trips.



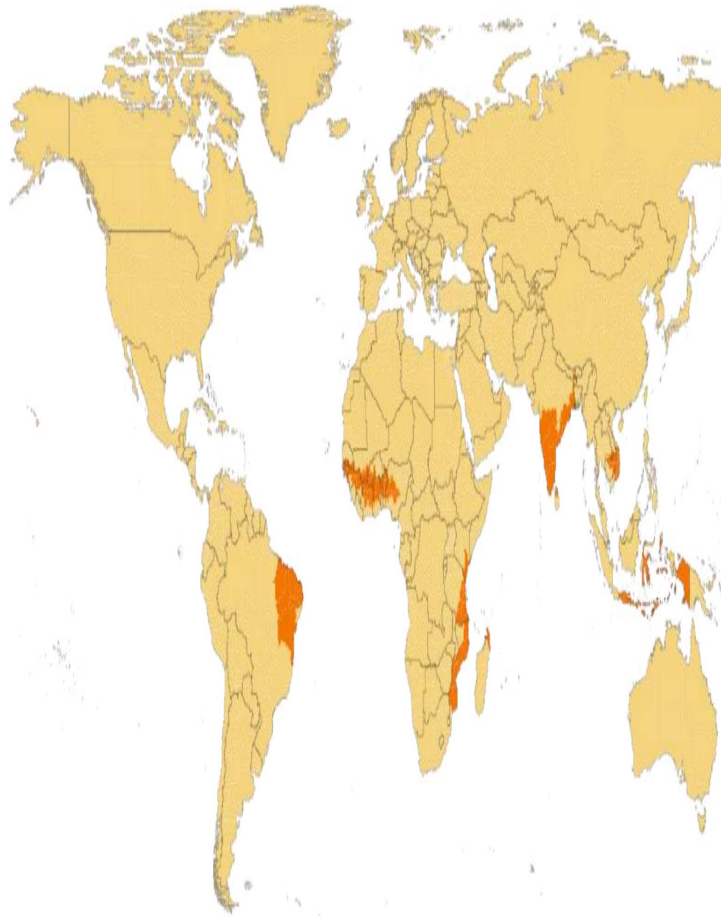
Development of high yielding and
drought tolerant cashew varieties

Abu Dadzie, 18 th October 2018

Origin of Cashew

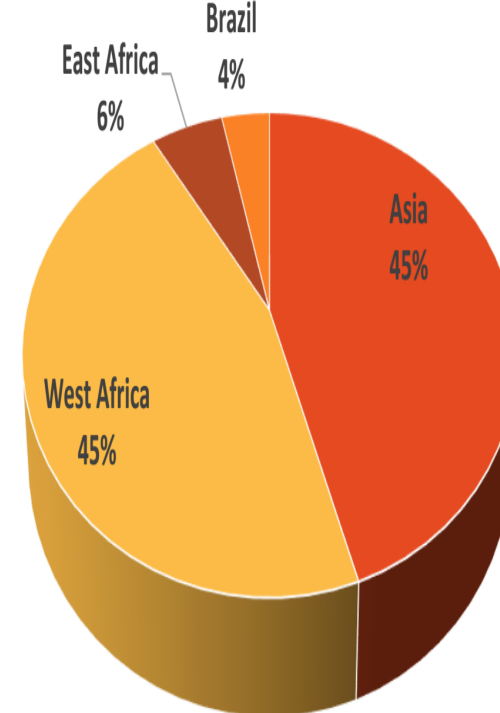
- ❑ **Cashew** (*Anacardium occidentale*)
originated from Brazil.
- ❑ Production is centered in tropical regions
of the world

Main Cashew production regions in the world



Share of cashew production by region in 2015

(Source: RONGEAD for iCA)

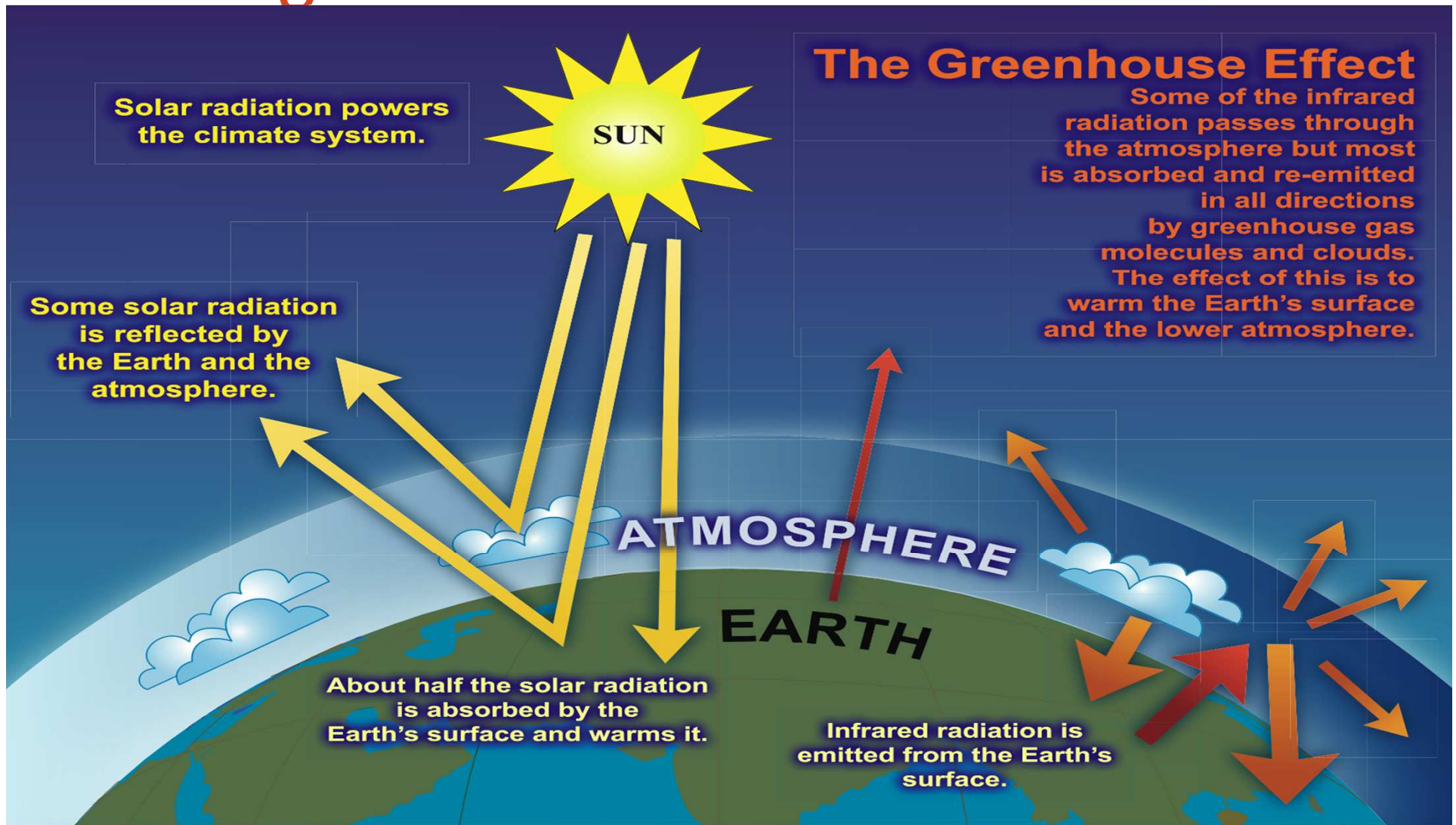


Source iCA, 2015

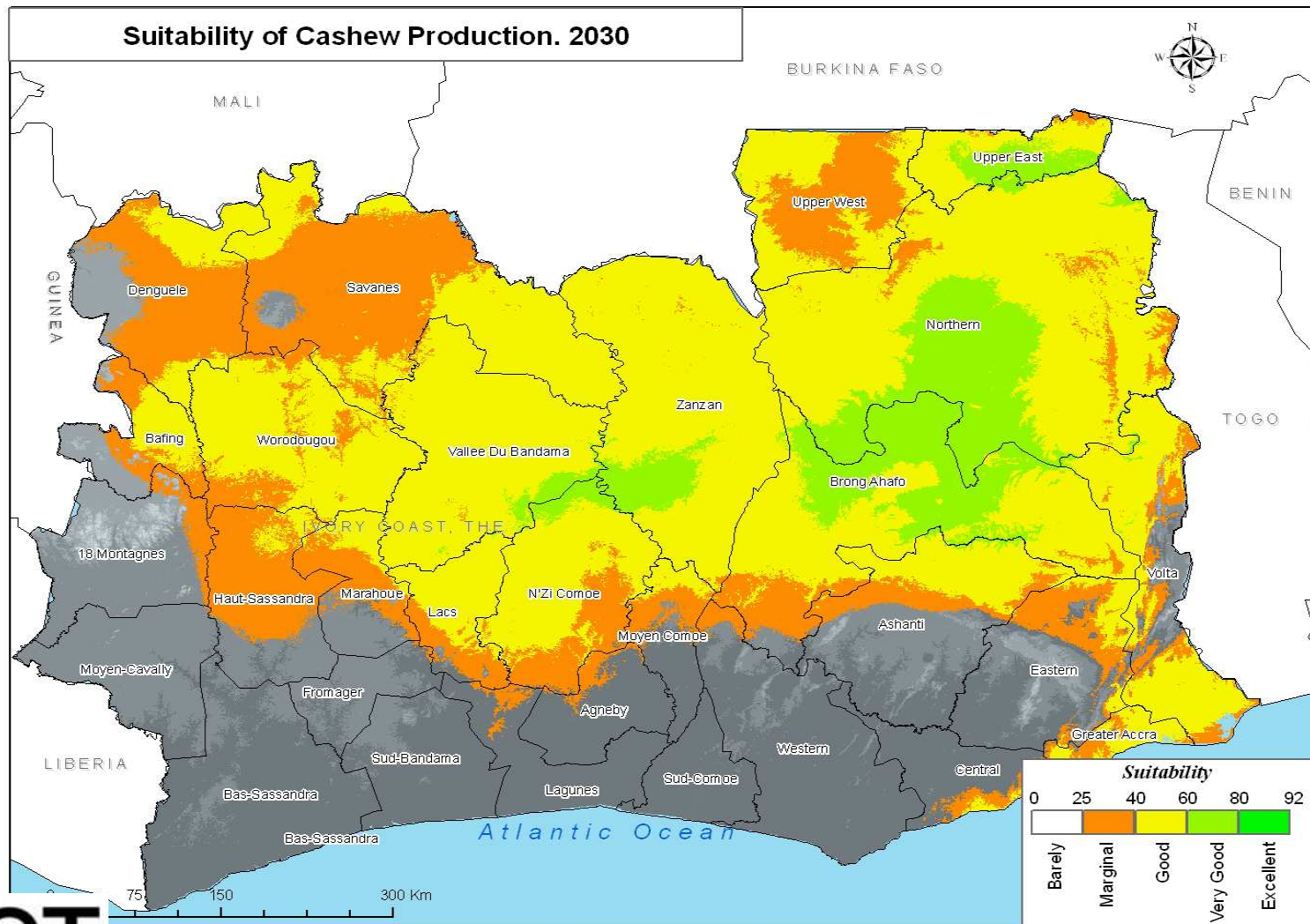
What are the challenges confronting cashew production?

- Low yields ?
- Low kernel percentage outturn?
- Pest and Disease?
- Impact of Climate change?

How do we address the present challenge

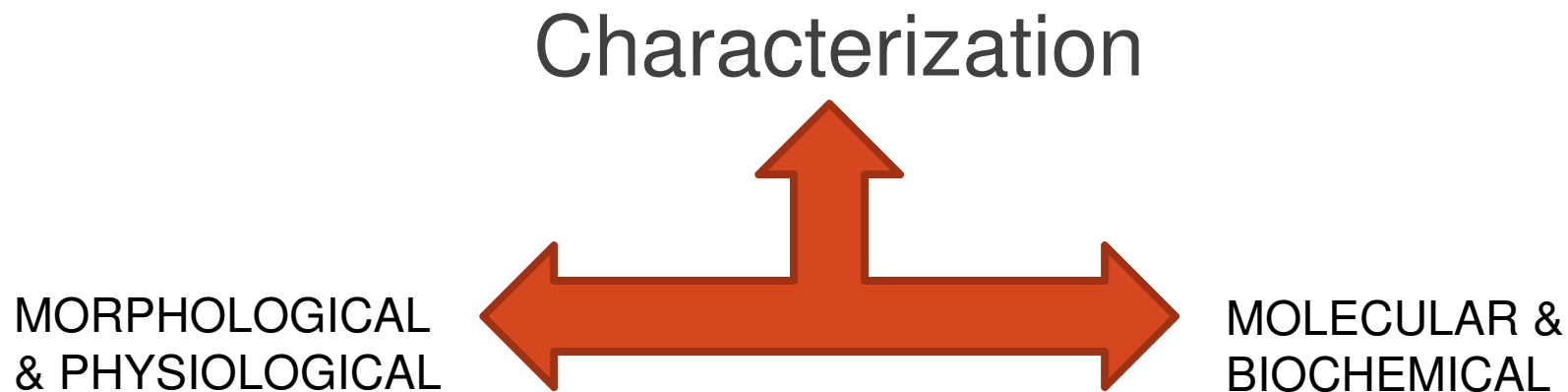


Suitability of cashew production. 2030 what happens next ?



How do we address the present and future challenges

- Access to well characterized germplasm collection.

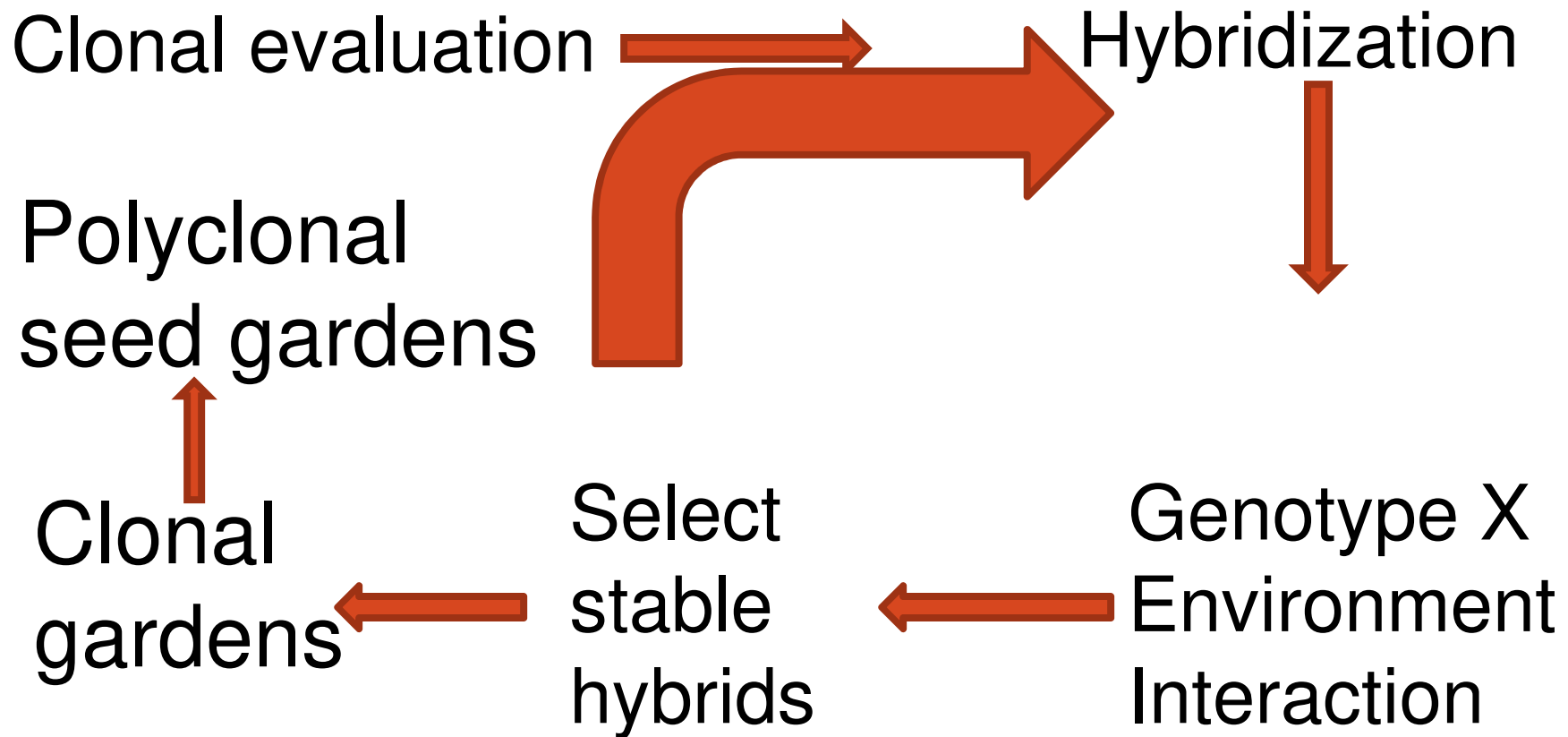


Mating design utilized

Diallel mating design

Males Females	SG 136 A	SG266 B	BE 268 C	4SG 224 D
A SG136	-	AB	AC	AD
B SG266	BA	-	BC	BD
C BE 268	CA	CB	-	CD
D SG 224	DA	DB	DC	-

Development of improved planting materials tolerant to drought.





Thank you / Merci